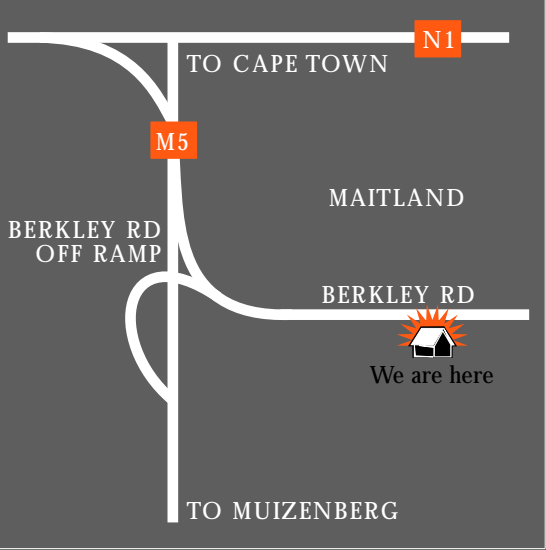




CONTACT US



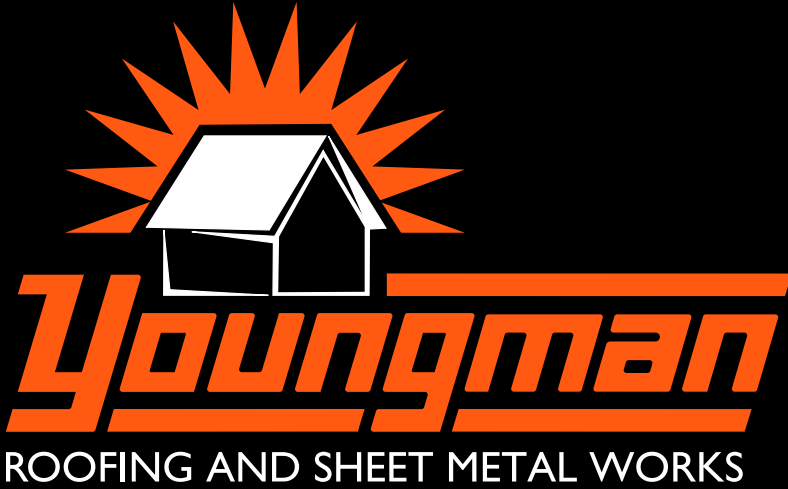
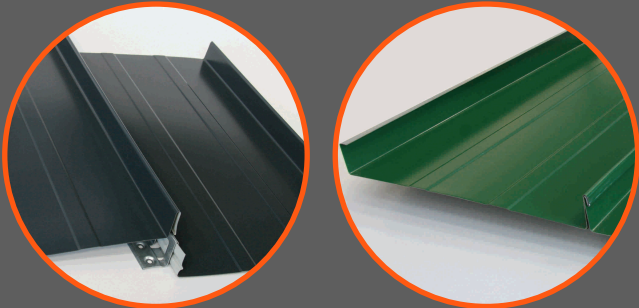
[www@youngman.co.za](http://www.youngman.co.za)



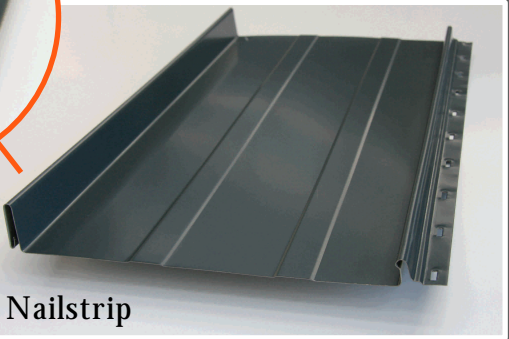
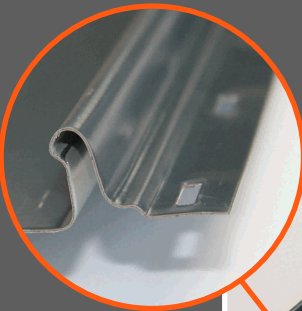
Physical Address:  
22 Berkley Road  
Maitland  
7404

Postal Address:  
P.O. Box 568  
Maitland  
7404

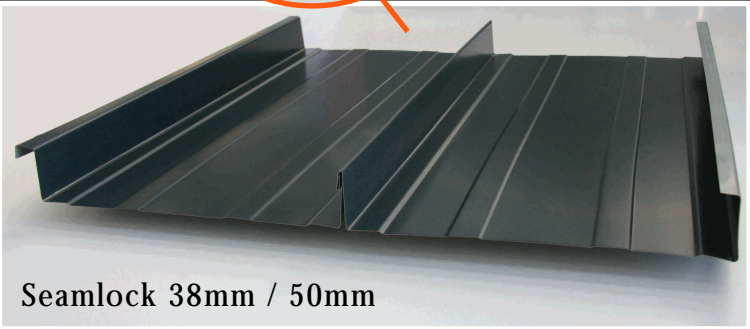
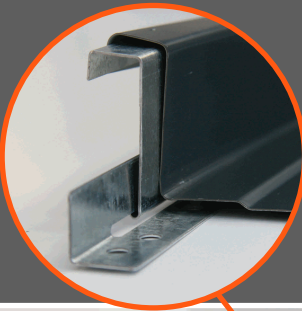
Tel: 021 511 8125  
Fax: 021 511 4960  
Email: [info@youngman.co.za](mailto:info@youngman.co.za)



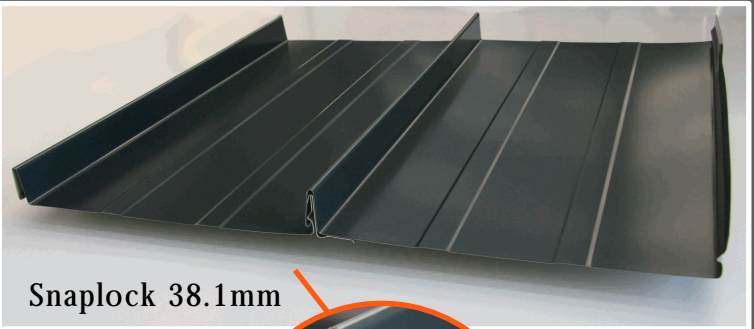
CONCEALED-FIX ROOF SHEETING PROFILES AND SOFFIT PANELS



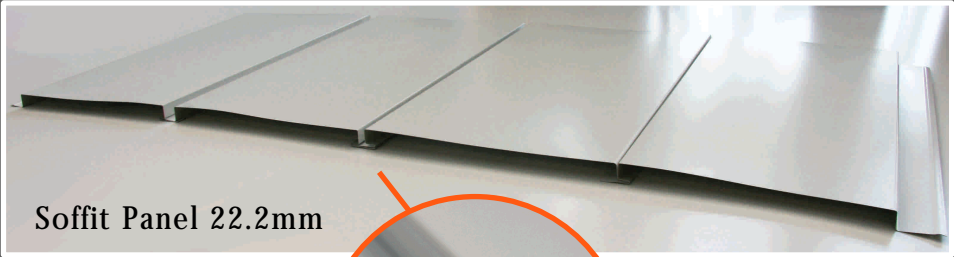
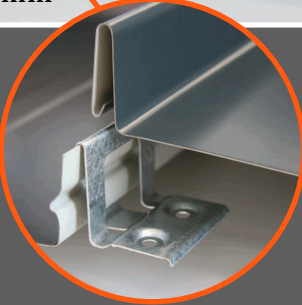
Nailstrip



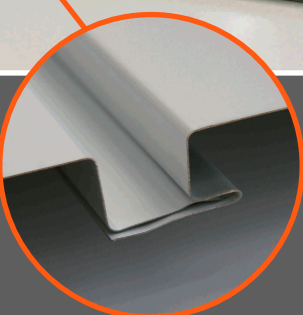
Seamlock 38mm / 50mm



Snaplock 38.1mm



Soffit Panel 22.2mm



## INTRODUCTION



Concealed-fixing is a fixing method whereby the roof sheets are fixed to the purlins via a clip system, eliminating the use of external fixings (roof nails or screws), which pierce the roof sheeting. This system is also known as “secret-fixing”, as the roof sheeting completely hides the fixing clips, providing a finished product with a neat and completely watertight finish.

### Why use concealed-fix roof sheeting?

Concealed-fix roofing is designed to provide a continuous length roof covering, without end-laps, for buildings with very low pitches - as low as 1.5 degrees.

Youngman Roofing's On-Site Roofing Division manufacture the sheets on site, which ensures the supply of continuous length sheets, which are longer than those that can be delivered to site by road transport. The mill can be located onto the roofs of multi-storey buildings, eliminating the necessity of pulling the finished product up the side of the building with the use of ropes, a procedure which often causes damage to the sheets.

The roof sheets are not pierced with nails or screws, which reduces the incidence of corrosion, which can usually be detected around the fixing screws on existing roofs.

Concealed fixing totally eliminates the risk of leaks around external fixing points i.e. the screws or nails used during pierce-fixing, as no holes are made in the actual roof covering. This is especially important in the case of lower pitched roofs.

Concealed-fix profiles manufactured by Youngman Roofing are able to withstand extreme wind forces. All four of our profiles have been tested by the USA Underwriters Laboratories in accordance with the Dade County, Florida hurricane specifications and subsequently endorsed by SABS.

Concealed-fixed roofs are aesthetically pleasing as the finish has clean sharp lines and is uncluttered by visible fixings.

## MATERIALS AND FINISHES



### Specifications

Youngman Roofing's concealed-fix profiles are manufactured from the following materials:

- 0.53mm TCT Zinalume AZ150 G300: an aluminium/zinc alloy-coated steel made by Bluescope Steel Limited, which complies with Australian Standard AS 1397 and has a minimum coating mass of AZ150 (150g/m<sup>2</sup>) and a minimum yield strength of G300 (300 MPa).
- 0.53mm thickness Clean Colorbond AZ150 G300: a pre-painted Zinalume made by Bluescope Steel Limited, with a colour coating on one side and a backing coat on the reverse, complying with Australian Standard AS2728.
- 0.58mm thickness Chromadek Z200: a pre-painted zinc-coated steel, made by Arcelor Mittal, with a minimum zinc coating of Z200 (200g/m<sup>2</sup>) and minimum yield strength of G300.
- 0.8mm thick Aluminium EZ clad 44
- Copper
- Rheinzink

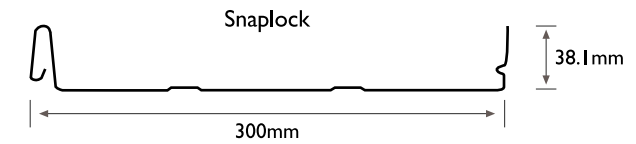
## PROFILES



Youngman Roofing offers four different profiles to suit residential, commercial and industrial applications:

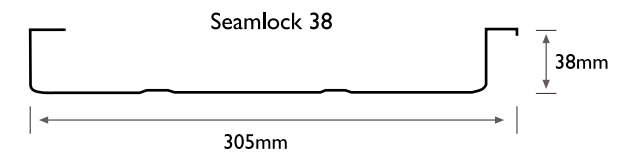
### Snaplock 38.1mm

Suitable for roof pitches of 1.5 degrees or greater and purlin spacings of up to 1m. This profile is very popular in residential applications owing to its aesthetically pleasing profile as well as the speed and simplicity of fixing.



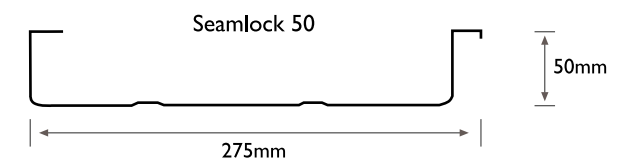
### Seamlock 38mm

Suitable for the same applications as Snaplock. The side lap of the roof sheet is seamed over together with the fixing clip and the adjacent sheet forming an extremely stable and wind resistant roof covering, which cannot be unclipped. This is also the only concealed fix roofing system that can be smooth-curved, without deforming the sheet through cranking, thereby providing a smooth curved sheet (minimum 0.8m radius)



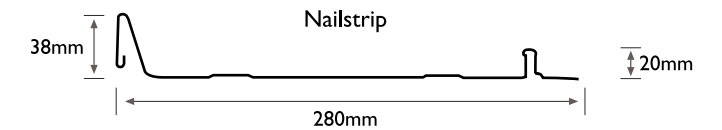
### Seamlock 50mm

Suited to commercial and industrial applications with purlin spacings of up to 1.5m.



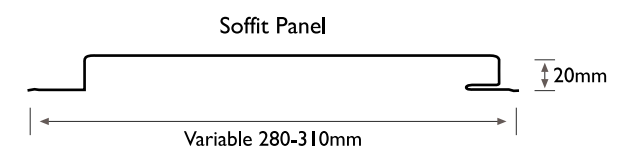
### Nailstrip

Suitable for roof pitches greater than 12 degrees. This is the only clipless concealed-fix system in South Africa and is well suited to the DIY market due to the ease of fixing.



### Soffit Panel 22.2mm

Youngman Roofing's Soffit Panel is well suited to vertical (wall) cladding and for decorative purposes or internal applications, especially in commercial buildings and to a lesser degree in industrial applications.



Common examples of usage:

- Forecourt canopies
- Petrol station forecourts
- Vertical cladding on the sides of buildings
- Ceilings underneath timber decking

The Soffit Panel is 22.2mm high and has an adjustable rebate of between 10mm and 25mm and can therefore be tailored to suit specific needs. (see fig. 1-3)

The panels of the Soffit Panels interlock without the use of clips and are also fixed via a concealed-fix method as each panel conceals the fixing screw of the previous panel.

#### Soffit Rebates

